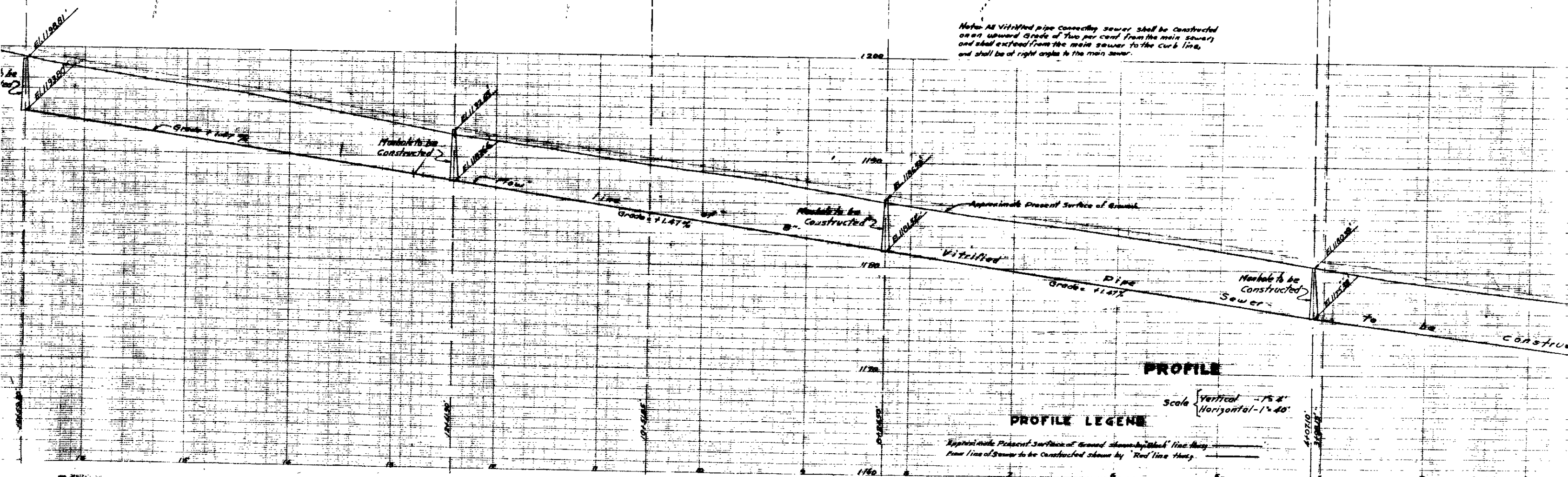


PLAN
Scale 1" = 40'

Note: All vitrified pipe connecting sewer shall be constructed on an upward grade of two per cent from the main sewer and shall extend from the main sewer to the curb line, and shall be at right angles to the main sewer.



PROFILE

Scale { Vertical - 1" = 4'
Horizontal - 1" = 40'

PROFILE LEGEND

Approximate Present Surface of Ground shown by "Solid" line. Sewer to be constructed shown by "Red" line. Vitrified Pipe